

For the easiest and most efficient way to perform a variety of Work measurement studies, Omega Results Ltd introduces the Umtplus ® software for handheld computers.

This innovative product replaces the lengthy process of using stopwatches and notepads to carry out studies and eliminates the tedium of data entry, thereby reducing errors and time taken – increasing efficiency and accuracy.

**Umtplus ®** is the essential tool to identify waste, optimise your resources and increase your productivity.

### **Umtplus ® Saves you time and money:**

Collecting data on a handheld computer with **UMTplus®** is up to 85% faster than using a stopwatch. By eliminating the step of manual data entry of results you minimise the risk of potential error

- Traditionally for every hour spent collecting data it takes three hours to input that data – NOW, with **UMTplus®**, data is transferred **instantly** with the click of a button. Once the data is transferred, a variety of reports are available for analyses – **immediately**.

### **A Versatile tool for Customised Work Measurement Studies:**

Whether self sampling or traditional work measurement the studies can be customised to complete

- Time Studies
  - Work Sampling – Self monitoring or managed
  - Random Studies
  - Simultaneous Studies – up to 10 processes at one time
- 
- The same tool that any employee can learn to use in a matter of minutes, also provides expanded analytical capabilities for engineers.

### **With the Umtplus® package you can find solutions faster:**

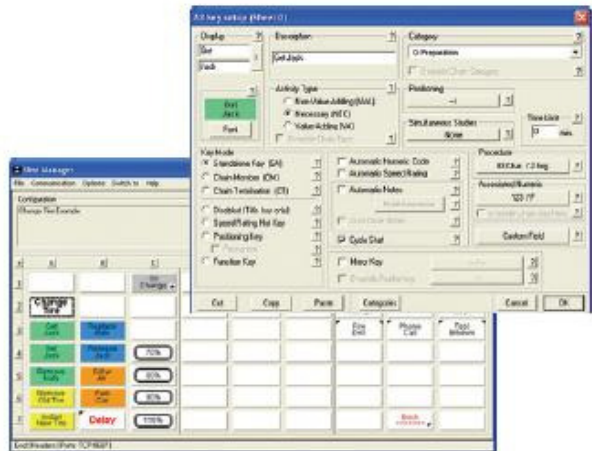
Optimise your resources by understanding where and how time is being spent. Work measurement studies using **UMTplus®** easily identify opportunities for improvement.

- By quickly identifying where time is wasted you will save money.





The Umtplus® package comprises three elements – UMT Manager to create the study on your PC, the study transferred to your PDA and Stat Umt, the reporting tool to analyse the results of the studies on your PDA.



- Create, Edit and Manage any number of configurations from your PC
- Virtually unlimited elements per configuration with up to 16 levels
- Up to 51 programmable categories
- Use colour to assist easy data entry
- Transfer and access configurations easily
- Set statistical parameters and confidence intervals
- Classify each element as Value added, Non Value added or Necessary

Collect data simply with one click on the appropriate button on your PDA

#### SYSTEM REQUIREMENTS

Windows® 95 / 98 / 2000 / NT 4 / XP

FOR PALM OS® HANDHELDS:  
Palm OS® 3.0 or higher,  
Serial Cradle with any Handheld  
USB Cradle only with Palm™/ Sony  
CLIE™ Handheld  
PalmDesktop version 4.1 or higher with  
USB Cradle

FOR POCKET PC HANDHELDS:  
Microsoft ActiveSync 3.7 or higher  
Windows Mobile™ 5 for Pocket PC,  
Pocket PC 2003,  
Pocket PC 2002 or Pocket PC 2000,  
USB Cradle for your handheld



- Times recorded to 1/100<sup>th</sup> of a second
- View and edit all observations while completing the study
- Use multiple PDAs to collect data for large studies
- Enter up to eight descriptive headers for each study
- Add speed ratings to your observations
- Add numeric codes automatically or manually enter during the study
- Add comments to your observations – automatically or manually
- View the designated number of observations needed to comply with statistical parameters

#### StatUmt to perform data analysis and produce reports and graphs

- Instantly view reports and graphs: Normalised summary; Pareto, List of actions; Summary; Compilation, Takt Time and Time Distribution charts
- Transfer data to Ms Excel, Ms Access or other spreadsheets/databases
- Combine compatible studies
- Edit studies at any time
- Manipulate results by excluding elements for clarification – the results are automatically recalculated

