



UMTPlus



Overview

The UmtPlus® package includes three comprehensive software modules:

UmtManager: This program allows you to easily create, edit and manage any number of configurations from a PC to perform your time study or work sampling.

UmtPlus®: (for PDA) This program allows you to accurately collect data for work measurement on handheld computers.

StatUmt: This program allows you to instantly review reports and graphs while easily manipulating data for analysis on a PC.

Using UmtPlus® makes your work measurement studies easier and more accurate, plus you get your results faster...

Capabilities

UmtPlus™ is the ultimate tool for performing:

Time Studies

Eliminate data entry and accurately record data

Work Sampling

Understand and optimize your resources

Random Studies

Set an alarm that cues the sampler to input an entry

Self Work Sampling

Use the random alarm to have employees self work sample

Simultaneous Studies

You can study up to 10 processes at the same time

What kind of work measurement studies do you do? Send us an [email](#), we just might have a solution that will save you time...

Benefits

UmtPlus Saves you Time and Money:

Collecting data on a handheld computer with the UmtPlus™ is **up to 85% faster than using a stopwatch**. Furthermore, by eliminating the step of manual data entry, you minimize the risk of potential error.

Create Your Study, Your Way

Whether it is self sampling or more traditional work measurement studies, UmtPlus™ is developed to be a **flexible program** that allows you to easily customize each study to suit your needs.

Furthermore, you can easily program each element field so that it sends data to specific cells within your Excel template. It's really easy to do and saves you countless hours of data entry.

You Find your Solutions Faster

Doing work measurement studies with UmtPlus™ grants you **instant access to reports** that will help you to quickly determine where and how to implement your solutions.

Simply put, UmtPlus is:

More Accurate, More Flexible and More Efficient

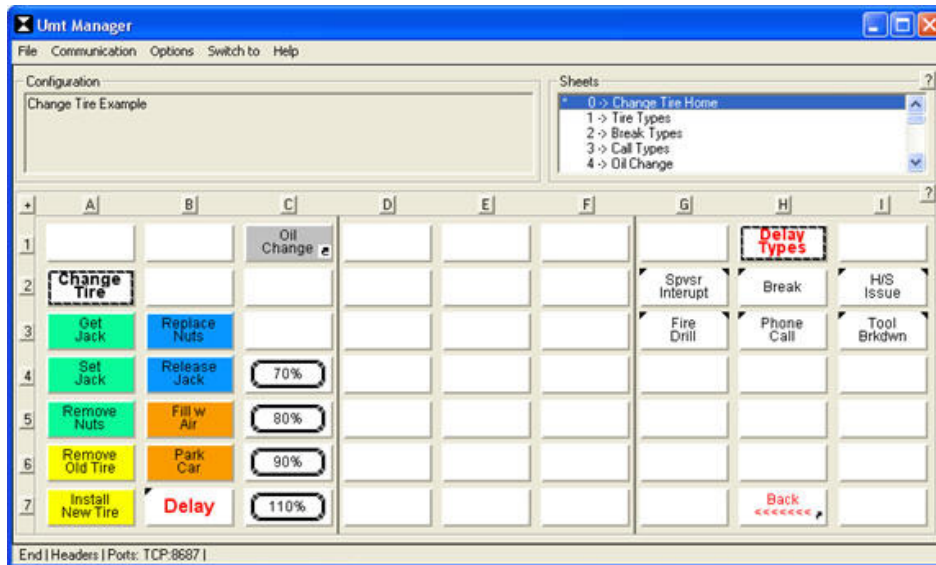
Umt Manager

UMT Manager is designed to allow you to easily create, edit and manage your study from your PC. Once you have completed your configuration, a few simple clicks transfers the study to any number of PDAs and you will be ready to start your study.

- Did you forget to program an element in the PDA? Don't worry, you are able to easily add it directly on your PDA, or you can even program your entire study from the PDA if you prefer, it's all about flexibility!

UMT Manager Worksheet

Below is an example of the UMT Manger worksheet - each cell can be programmed individually with up to 16 levels per element. Once transferred to a PDA, you will see two or three columns at a time, so you can design the layout to meet your needs.



Easily Program each key:

Click the key you wish to program from the UMT Manager worksheet, and simply complete the fields that are relevant to your time study or work sampling study. You will be able to see reports on activity type, activity category and much more.

A3 key setup (Sheet 0)

Display: Get, Jack

Get Jack (highlighted)

Font

Description: Get Jack

Category: 0- Preparation

Override Chain Category

Activity Type:

- Non-Value-Adding (NVA)
- Necessary (NEC)
- Value-Adding (VA)

Override Chain Type

Positioning: -->

Simultaneous Studies: None

Time Limit: 10 min.

Key Mode:

- Standalone Key (SA)
- Chain Member (CM)
- Chain Termination (CT)
- Disabled (Title key only)
- Speed Rating Hot Key
- Positioning Key
 - Permanent
- Function Key

Automatic Numeric Code

Automatic Speed Rating

Automatic Notes

Note Sequence

Auto Close Notes

Cycle Start

Occurrence Counter

Mirror Key

Override Positioning

Procedure: 96 Char. / 0 Img.

Associated Numeric: 0.000 / F

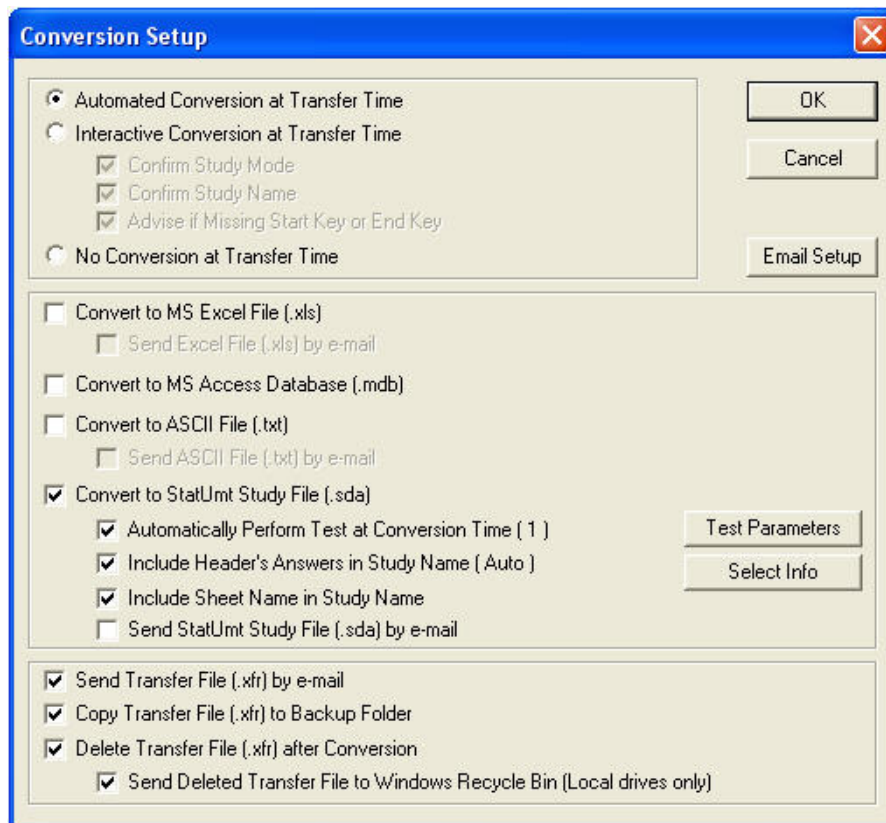
Override Chain Ass.Num.

Custom Field

Buttons: Cut, Copy, Paste, Categories, Cancel, OK

Transfer your Configuration

The UMT Manager Program allows you to automatically transfer the data into an MS Excel, MS Access, a STATUMT study file or all three, all you have to do is check the transfer type you want.



The UMT Manager Program has a wealth of features and benefits that help you to perform a more accurate study with greater ease. To learn more about how this program can benefit you, please contact us.

UmtPlus for PDAs

Collect data simply by clicking on the applicable element on your PDA

UmtPlus® is designed to facilitate and optimize your data capture process. Once you have completed your study, simply transfer the data back to your PC and you are ready to start your analysis.

- Want to know how the study is going?
On your PDA you can review your statistics in real time.

Below is an example of what UmtPlus® can look like on a PDA. Simply click on an element and the time is logged.



- Not only are PDAs easier to use than stopwatches, you can also quickly demonstrate that you are aiming to reduce the non-value added activities to improve efficiency... it is not as intimidating as the stopwatch system.

With UmtPlus® on your PDA, you benefit from these features:

- Times are recorded to 1/100th of a second
- You can view and edit all observations at any time while on the floor
- You can use multiple PDAs to collect data
- Enter up to eight descriptive headers for each study
- Add speed ratings to your observations
- Add numeric codes automatically or manually as you go
- Add comments to your observations manually or automatically
- View the designated amount of observations needed to respect statistical parameters
- And so much more...

The UmtPlus Program has a wealth of features that help you to collect data more easily and more accurately. To learn more about how this program can benefit you please contact us



StatUMT

This sophisticated statistical program is the perfect tool to analyze your data.

Spreadsheets are great, but limited... With the amazing StatUMT program, you can combine files with a simple click and analyze more than a million observations at a time.

- Instantly view reports and graphs
- Easily transfer data to MS Excel or MS Access with a simple click.
- Ability to combine compatible studies
- Easy to edit a study at any time
- Exclude data from your analysis - reports are automatically recalculated
- StatUmt will test all studies for you, according to your criteria
- Charts and reports can be presented and printed by duration or occurrence
- And so much more...

This statistical program offers a wealth of features that help you to analyze your data and share your results. To learn more about how this sophisticated software can benefit you, please contact us.

NEW Excel feature works to easily populate your existing spread sheets



Many of our customers have told us how beneficial it would be if the data that they collected on their handheld could be directly inserted into their existing Excel templates, so we made it happen.

Now you can easily program each element field so that it sends data to specific cells within your Excel template. It's really easy to do and saves you countless hours of data entry. You will of course still have access to all of the graphs, charts and reports in the StatUMT program as well.

Charts and reports available using statUMT include:

List:

In List view, see the details of all observations.

Summary:

With the Summary view, you will see all of the statistical info for each element (activity).

Normalized summary:

Personalize your analysis with the Normalized Summary report. Want to normalize a study with a specific driver? Select your driver (underlined) from among the occurrences, sum of numeric values or override columns, and the frequencies of all elements will be adjusted to this driver.

Compilation:

See the compilation by type, by category and by category and type.

Chart by type:

If you are conducting a continuous improvement project and you want to reduce the non value-added (NVA) activities, the chart by type will tell you which activities are wasteful, from the most to the least.

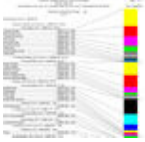
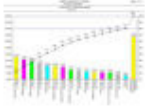


Chart by Category and Type:

This chart is a blend of the chart by type and chart by category.



Pareto Chart:

With a simple click, view and print the Pareto chart for your selected elements.



Need more chart and reports?

Using the Tools menu from STATUMT, transfer all data directly to MS Excel, MS Access or any other spreadsheet or database with a simple click.



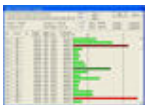
Element exclusions:

Exclude any element from the study. All calculations will be recalculated automatically, excluding all observations related to the excluded element. Elements on the left side of the Element Exclusions dialog box will be excluded from the analysis.



Observation exclusions:

Find elements with observations out of the range (that you set) of acceptable data. If you wish to exclude specific observations from your analysis, select the applicable element and click the Edit Element button.



Element Editing:

In the Element Editing dialog box, uncheck the undesired observations, and all calculations will be recalculated automatically, excluding observations unchecked for this element. The green bars represent the observations within your criteria, and the red bars represent the observations outside of your criteria.

For further information contact – Bob James at

Omega Results Ltd, 20 The Range Highnam, Gloucester

United Kingdom GL2 8NL

**Tel: #44 (0) 1452 506962 (07979 933779)
enquiries@omegareresults.co.uk**

Case Studies

TRUCK MANUFACTURING



Beyond the Stopwatch: Improve Production Rates

The Continuous Improvement Department at a leading truck manufacturing plant is seeing results from their Kaizen related efforts. Their goal is to double the amount of trucks that they manufacture in a day, by optimizing their resources while maintaining excellence in quality performance. As part of their improvement project, they needed to know the precise amount of time being spent on non value adding tasks at each assembly station, in order to optimize their operation.

The Challenge:

At this plant, in Montreal, work measurement studies used to be done the traditional way with a stop watch and a paper form to evaluate value added and non value added tasks during their process. "We needed a better system," the Senior Production Coordinator explained.

"When we were using stop watches it was very hard to collect task times, having to hold the stopwatch and write the information at the same time. The results were not accurate, and the data collection was not easy."

The Solution:

After researching their possibilities, the Continuous Improvement Department opted to invest in UmtPlus®, the highest quality work measurement tool that leverages handheld computers. This software, developed by Laubress, facilitates and optimizes the data collection process. After customizing their study to suit their needs, five handheld computers were uploaded with the required information and given to employees. After a mere two hours of training, they were sent into the plant where they evaluated some 70 assembly workers in just three days.

"Now with UmtPlus, it's simple, you just need to click on the appropriate icon and your time is logged"

The Result:

Once the tasks have been accurately timed on the PDA, the results are uploaded to the computer without having to do any data entry, "it's so simple," says the Project Coordinator. Another benefit of using the software that they have noticed is that the employees on the assembly line prefer to see the PDAs rather than a stop watch. "It's easier to demonstrate that we are just aiming to reduce the non value added activities in our assembly operation to improve efficiency. It's not as intimidating as the stopwatch system." Using the data from the UmtPlus® work measurement studies, this manufacturing plant has been able to identify where to implement solutions, ultimately increasing their productivity.

"Using UmtPlus has made our work measurement process easier and definitely more accurate"

WAREHOUSE WORK SAMPLING



Testimonial

The implementation of an engineered labour standard program requires extensive sampling by the engineer on the warehouse floor in the middle of the action. The ability to quickly record and analyze data and adapt to an ever-changing environment are two of the challenges faced by industrial engineers. In order to predict additional delays within a warehouse setting an engineer will have to complete a work sampling study. The results of such a study will increase the standard time by the observed percentage to allow for things such as aisle and dock congestion.

Prior to using UmtPlus, we would have to manually record each task an employee was performing on a grid outlined on a piece of paper, attached to the ever-present clipboard. Whereas the credibility of the study relies upon many samples, a stack of paper soon begins to accumulate, as each department within the warehouse would require its own study. Once the study was completed each sheet had to be tallied and processed by a spreadsheet to ensure the accuracy of the study had been met. This whole process used much of the engineer's valuable time simply entering data and counting tick marks on sheets. Streamlining the process with UMT was more than welcomed by the engineers.

Gone are all pieces of paper and the clipboard, replaced by a small and compact PDA. Everything can be developed on our laptop and simply downloaded for immediate use on the PDA. By pressing the proper button on the screen, the data is collected and instantly analyzed as the study is ongoing. The random alarm will alert the engineer to gather the next set of samples, adding to the credibility of the entire study. If the study is to be taken over several days, separate studies can be completed, and then automatically merged into one through STAT-UMT.

Perhaps the best feature of UMT is that the engineer does not have to focus solely on one type of study or sampling, it has the flexibility of five different configurations. We can perform work sampling, stopwatch and frequency studies while never having to leave the floor and "reload" with paper. This multi-tasking feature enables us to maximize the amount of data gathering while on the warehouse floor.

UmtPlus has not simply reduced the amount of paperwork we have to analyze; it has eliminated it.

Sincerely,
Shaun Castle, P.Eng